



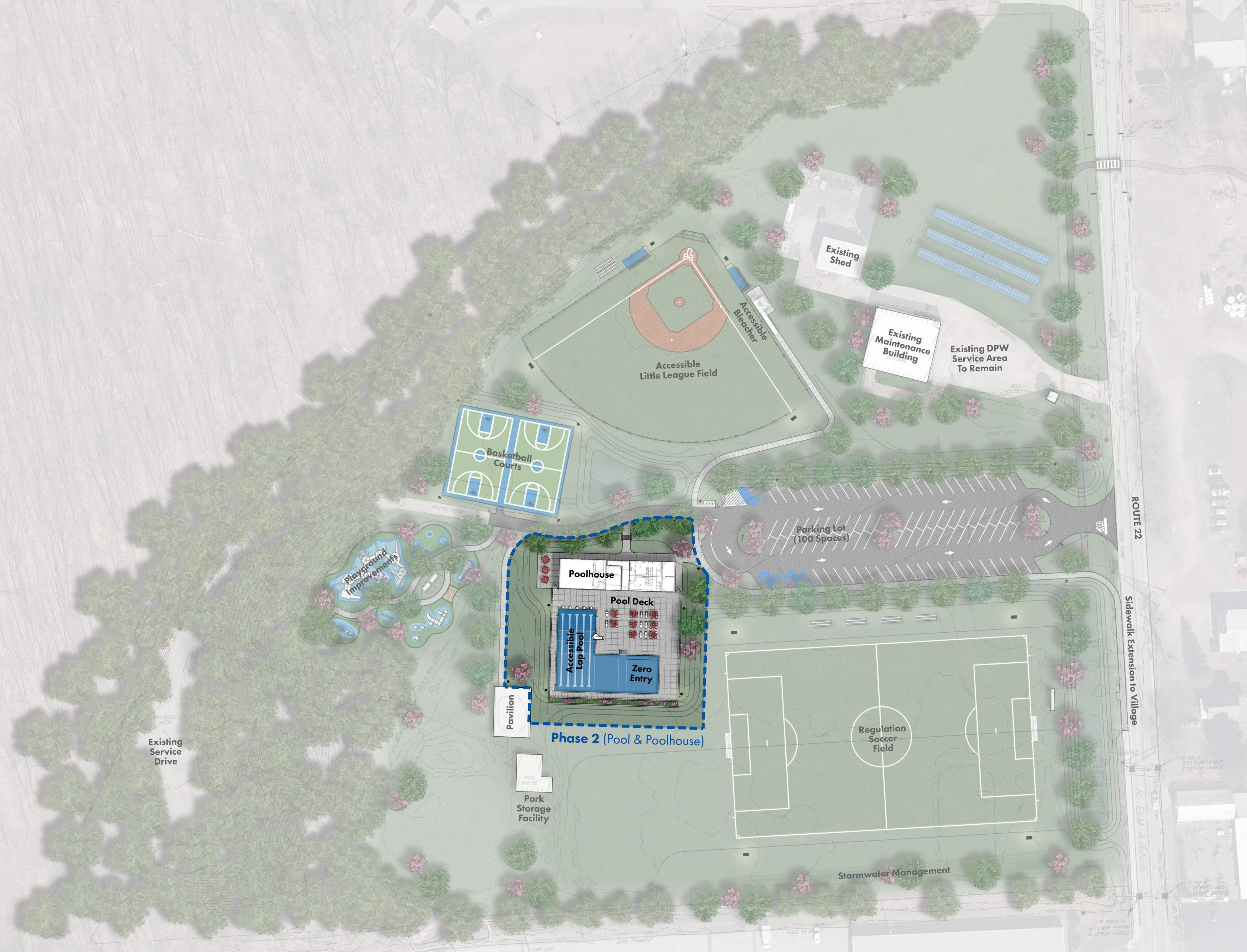
## Masterplan Elements

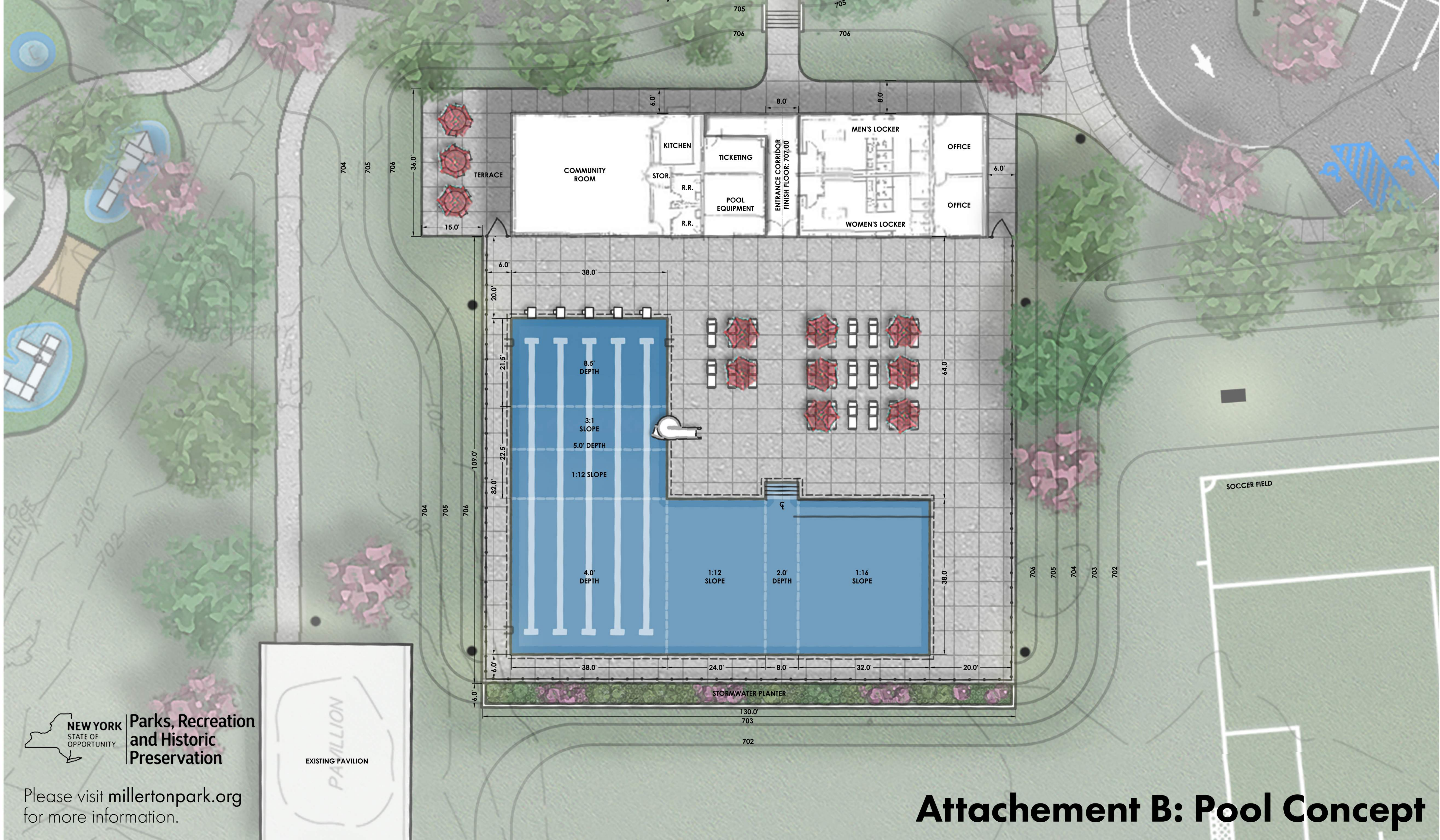
### Phase 1 (2021 - 2022)

- New entrance
- Parking spaces for 100 cars
- Flowering and shade trees
- Green technology for stormwater management and pollution prevention
- Regulation size sod soccer field
- 2 full-size basketball courts
- Handicap accessible playground upgrades
- Little League Field handicapped accessible bleachers and walkway
- Electrical infrastructure for future installation of EV charging stations, Wi-Fi and lighting
- Renovation of existing bathhouse and pavilion

### Phase 2 (2024-2025)

- Poolhouse and year-round Recreation Center with showers, changing rooms, concession stand, offices, and solar panels
- Green Infrastructure
- Decorative landscaping including a stormwater planter with native shrubs & grasses
- 5 lane swimming pool with accessible zero entrance
- Sanitary/water connection for all new facilities
- Electrical infrastructure (transformer, wiring) and lighting for the parking lot and pathways to the poolhouse
- Rehabilitation of existing bathhouse for park storage







**Attachment C: Poolhouse**